

# Blog Archive

Archived: 2026-04-10 02:18:53 UTC

## Morphisec's Blog

### Stay up-to-date

Get the latest resources, news, and threat research delivered to your inbox.

#### Category

All

Adaptive Exposure Management

Advanced Threat Defense

Annual Loss Expectancy

Artificial Intelligence

Automated Moving Target Defense

Continuous Threat Exposure Management (CTEM)

Cybersecurity News

Defense-in-Depth

Fileless Malware

Financial Cybersecurity

Gartner

Healthcare Cybersecurity

In-Memory Attacks

Legacy Security

Linux Security

Managed Service Providers

Microsoft

Morphisec Labs

Morphisec News

Preemptive Cyber Defense

Preemptive Security

Ransomware

Threat and Vulnerability Management

Threat Research

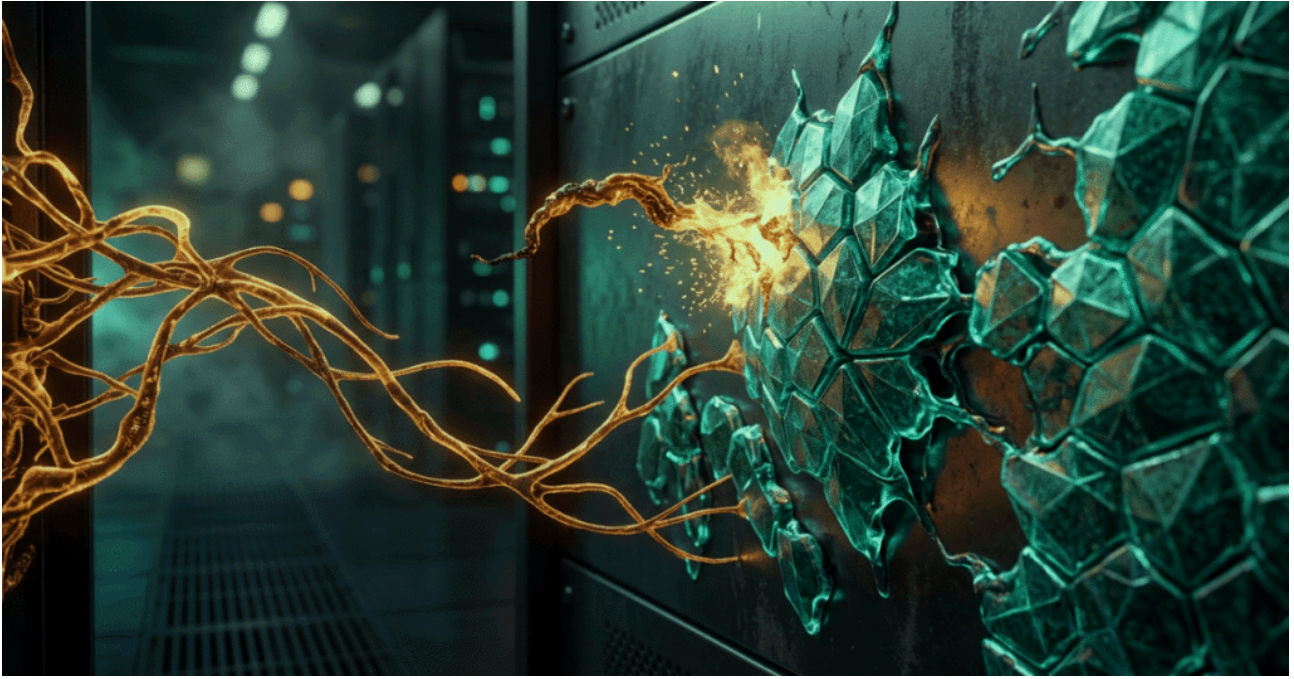


Brad LaPorte | New York | 09 Apr 2026

## Why Traditional Cybersecurity Fails Against Ransomware

Artificial Intelligence

Ransomware



Brad LaPorte | New York | 06 Apr 2026

## **AI-Enabled Ransomware Demands AI-Enabled Defense — Not Just Better Recovery**

Artificial Intelligence



Brad LaPorte | New York | 02 Apr 2026

## **From Visibility to Prevention: Why Exposure Management Needs Preemptive Security**

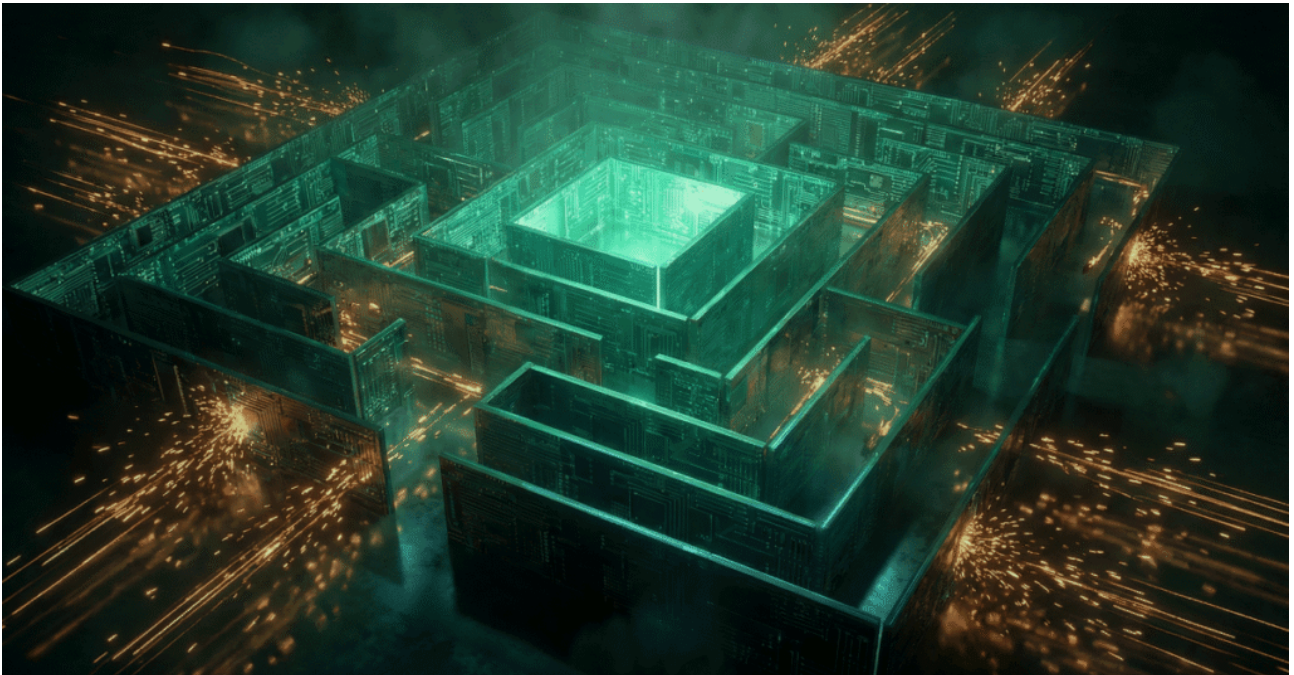
Managed Service Providers



Ilia Kulmin | 30 Mar 2026

## Case Study: When Forum Disruption Reshapes the Ransomware Market

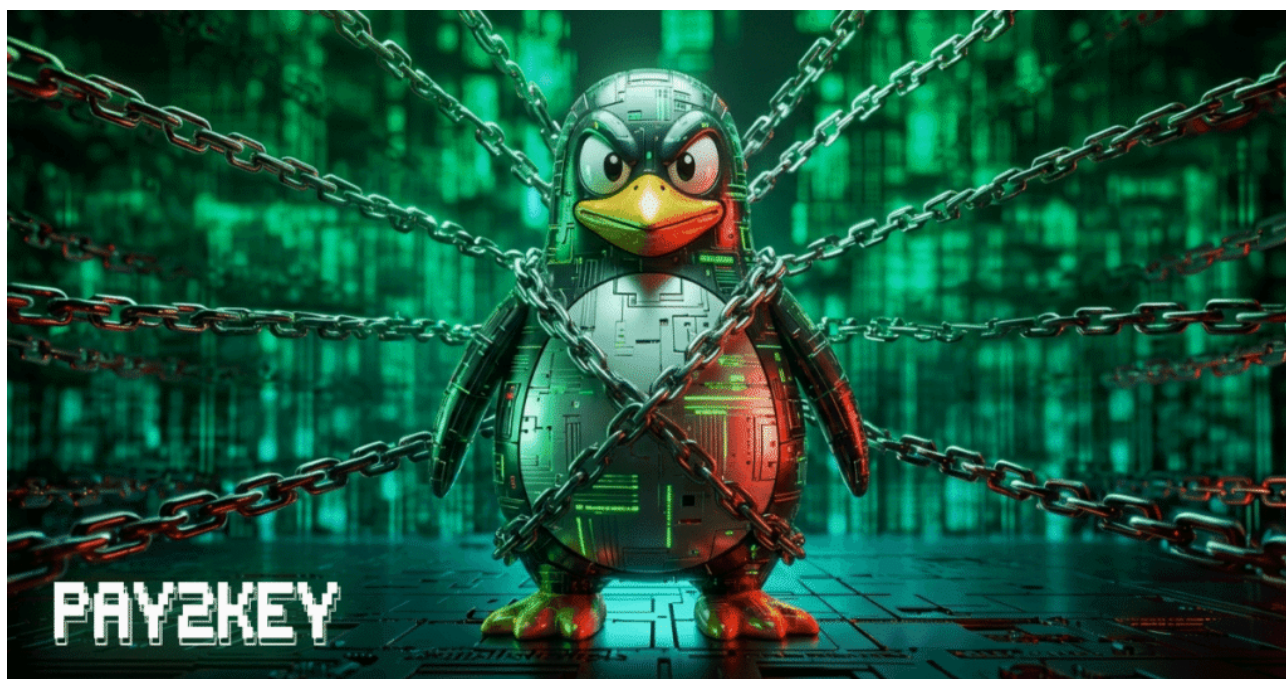
Threat Research



Brad LaPorte | New York | 26 Mar 2026

## AI-Enabled Threats Demand Adaptive Cyber Resiliency

Artificial Intelligence



Ilia Kulmin | 24 Mar 2026

## **Inside Pay2Key: Technical Analysis of a Linux Ransomware Variant**

Linux Security

Threat Research

---

Source: <https://blog.morphisec.com/google-ppc-ads-deliver-redline-taurus-and-mini-redline-infostealers>