

GitHub - ehang-io/nps: 一款轻量级、高性能、功能强大的内网穿透代理服务器。支持tcp、udp、socks5、http等几乎所有流量转发，可用来访问内网网站、本地支付接口调试、ssh访问、远程桌面，内网dns解析、内网socks5代理等等.....，并带有功能强大的web管理端。 a lightweight, high-performance, powerful intranet penetration proxy server, with a powerful web management terminal.

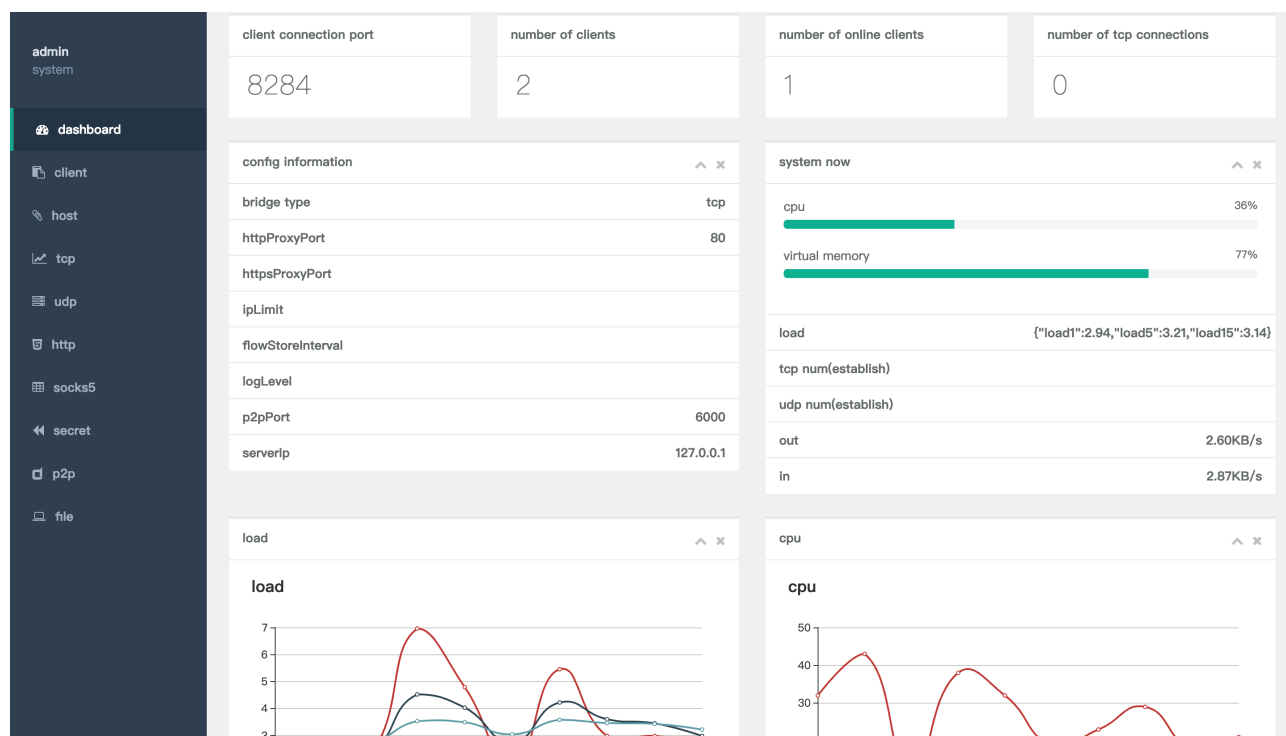
By cnlh

Archived: 2026-04-05 16:39:37 UTC

Stars **34k** Forks **6.1k** chat on gitter Release downloads **2.7M**

[README](#) | [中文文档](#)

NPS is a lightweight, high-performance, powerful **intranet penetration** proxy server, with a powerful web management terminal.



Feature

- Comprehensive protocol support, compatible with almost all commonly used protocols, such as tcp, udp, http(s), socks5, p2p, http proxy ...
- Full platform compatibility (linux, windows, macos, Synology, etc.), support installation as a system service simply.
- Comprehensive control, both client and server control are allowed.
- Https integration, support to convert backend proxy and web services to https, and support multiple certificates.
- Just simple configuration on web ui can complete most requirements.
- Complete information display, such as traffic, system information, real-time bandwidth, client version, etc.
- Powerful extension functions, everything is available (cache, compression, encryption, traffic limit, bandwidth limit, port reuse, etc.)
- Domain name resolution has functions such as custom headers, 404 page configuration, host modification, site protection, URL routing, and pan-resolution.
- Multi-user and user registration support on server.

Didn't find the feature you want? It doesn't matter, click [Enter the document](#) to find it!

Quick start

Installation

[releases](#)

Download the corresponding system version, the server and client are separate.

Server start

After downloading the server compressed package, unzip it, and then enter the unzipped folder.

- execute installation command

For linux、darwin `sudo ./nps install`

For windows, run cmd as administrator and enter the installation directory `nps.exe install`

- default ports

The default configuration file of nps use 80 , 443 , 8080 , 8024 ports

80 and 443 ports for host mode default ports

8080 for web management access port

8024 for net bridge port, to communicate between server and client

- start up

For linux、darwin `sudo nps start`

For windows, run cmd as administrator and enter the program directory `nps.exe start`

After installation, the windows configuration file is located at `C:\Program Files\nps`, linux or darwin is located at `/etc/nps`

If you don't find it started successfully, you can check the log (Windows log files are located in the current running directory, linux and darwin are located in `/var/log/nps.log`).

- Access server IP:web service port (default is 8080).
- Login with username and password (default is admin/123, must be modified when officially used).
- Create a client.

Client connection

- Click the + sign in front of the client in web management and copy the startup command.
- Execute the startup command, Linux can be executed directly, Windows will replace `./npc` with `npc.exe` and execute it with `cmd`.

If you need to register to the system service, you can check [Register to the system service](#)

Configuration

- After the client connects, configure the corresponding penetration service in the web.
- For more advanced usage, see [Complete Documentation](#)

Contribution

- If you encounter a bug, you can submit it to the dev branch directly.
- If you encounter a problem, you can feedback through the issue.
- The project is under development, and there is still a lot of room for improvement. If you can contribute code, please submit PR to the dev branch.
- If there is feedback on new features, you can feedback via issues or qq group.

Source: <https://github.com/ehang-io/nps>