

Recover lost passwords stored in your Web browser

Archived: 2026-04-05 15:35:22 UTC

	WebBrowserPassView v2.18 Copyright (c) 2011 - 2025 Nir Sofer
---	---

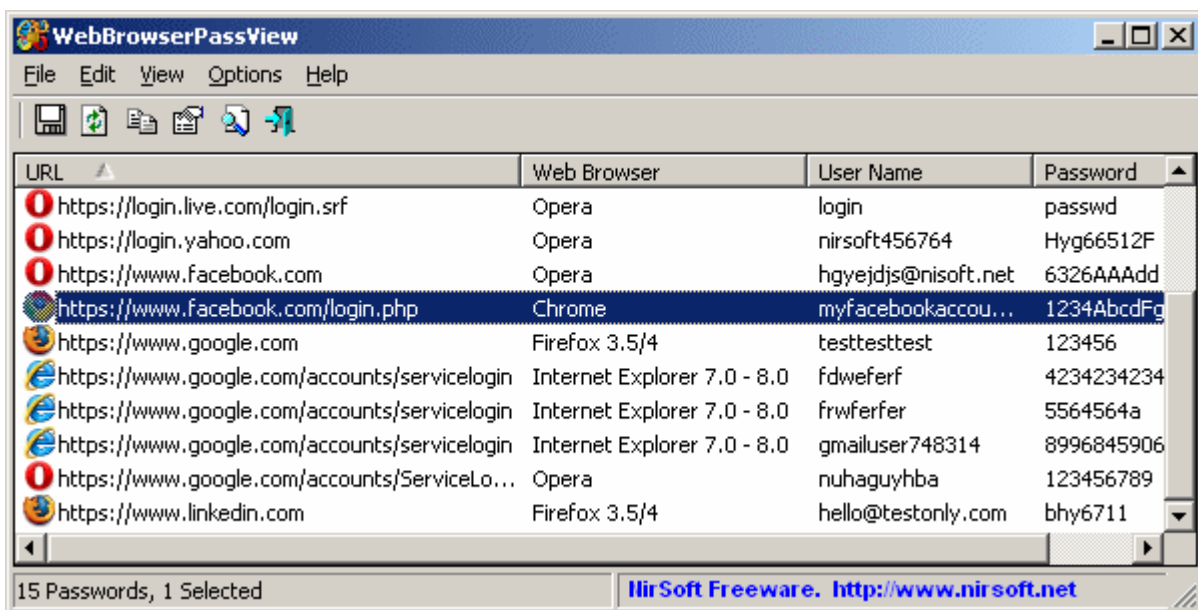
See Also

- [Windows Password Recovery Tools](#)
- [Saved Password Locations For Popular Windows Applications](#)
- [BrowsingHistoryView](#) - View browsing history of your Web browsers.

Description

WebBrowserPassView is a password recovery tool that reveals the passwords stored by the following Web browsers: Internet Explorer (Version 4.0 - 11.0), Mozilla Firefox (All Versions), Google Chrome, Safari, and Opera. This tool can be used to recover your lost/forgotten password of any Website, including popular Web sites, like Facebook, Yahoo, Google, and GMail, as long as the password is stored by your Web Browser.

After retrieving your lost passwords, you can save them into text/html/csv/xml file, by using the 'Save Selected Items' option (Ctrl+S).



System Requirements And Limitations

- This utility works on any version of Windows, starting from Windows 2000, and up to Windows 11, including 64-bit systems. Older versions of Windows (Windows 98/ME) are not supported, because this utility is a Unicode application.
- Currently, WebBrowserPassView cannot retrieve passwords from external hard-drive (Except of Firefox Web browser). Support for that might be added in future versions.
- On Internet Explorer 7.0-9.0, the passwords are encrypted with the URL of the Web site, so WebBrowserPassView uses the history file of Internet Explorer to decrypt the passwords. If you clear the history of Internet Explorer, WebBrowserPassView won't be able to decrypt the passwords.
- On Google Chrome - passwords originally imported from Internet Explorer 7.0-9.0, cannot be decrypted.

Versions History

- Version 2.18:
 - Updated to decrypt the passwords for the encryption change of Firefox 144.
 - Fixed a problem with getting the passwords of Opera.
- Version 2.17:
 - Updated to decrypt the passwords encrypted with app-bound encryption on new versions of Chrome (Third version of the app-bound encryption key).
- Version 2.16:
 - Updated to read the 'Login Data for Account' file of Google Chrome. Chrome Web browser may store passwords in this file when using a Chrome profile with Google account.
- Version 2.15:
 - Added support for decrypting passwords encrypted with app-bound encryption on new versions of Chrome (Version 135). This feature only works when you run WebBrowserPassView as Administrator (Ctrl+F11).
- Version 2.13:
 - Fixed a crash problem on Windows 11 24H2.
- Version 2.12:
 - Fixed to display the password of Chromium-based Web browser if it's not encrypted (Like in the portable version of Brave).
 - Updated to work properly in high DPI mode.
- Version 2.11:
 - Added new file type to save the passwords list: 'Firefox import/export csv file'. When you save the passwords in this file type, you can use the import feature of Firefox to import the saved passwords into Firefox: [Import login data from a file](#)
 - In order to save the passwords as 'Firefox import/export csv file', simply select the items you want to save (or press Ctrl+A to select all passwords), press Ctrl+S (Save Selected Items), choose 'Firefox import/export csv file' from the file type combo-box, type the filename to save and then click the 'Save' button to save the file.
- Version 2.10:
 - Added support for Brave Web browser.
- Version 2.07:
 - Fixed to decrypt passwords of Firefox profile that uses both 3DES and AES-256.

- Version 2.06:
 - Fixed WebBrowserPassView to decrypt the new password encryption on Opera Web browser
- Version 2.05:
 - Added support for decrypting the encryption key of new Firefox profiles (AES-256 instead of 3DES).
- Version 2.00:
 - Added support for the new password encryption of Chromium / Chrome Web browsers, starting from version 80.
 - Be aware that the 'Local State' file, located inside the 'User Data' folder, is needed for decrypting the passwords of Chrome 80 or later.
- Version 1.94:
 - Added new file format to export the passwords: Chrome CSV File. It's the same file format that Chrome Web browser exports the passwords from chrome://settings/passwords
- Version 1.93:
 - Added support for Chromium-Based Edge Web browser.
 - The download zip file is now password-protected.
- Version 1.92:
 - Fixed bug: WebBrowserPassView could crash when decrypting empty passwords in Firefox.
 - WebBrowserPassView now automatically detects the Waterfox Web browser.
- Version 1.91:
 - Fixed bug: WebBrowserPassView crashed when reading Firefox key file (key3.db) without a master key.
- Version 1.90:
 - Fixed WebBrowserPassView to work with Firefox 64-bit, and also WebBrowserPassView doesn't need anymore the installation of Firefox to decrypt the passwords. This change also fixes a crash problem occurred on some systems.
- Version 1.86:
 - Added 'Quick Filter' feature (View -> Use Quick Filter or Ctrl+Q). When it's turned on, you can type a string in the text-box added under the toolbar and WebBrowserPassView will instantly filter the passwords table, showing only lines that contain the string you typed.
- Version 1.85:
 - In 'Advanced Options' window, you can now specify the base profiles folder for Firefox and Chrome (e.g: E:\Users\user1\AppData\Roaming\Mozilla\Firefox\Profiles) and WebBrowserPassView will scan all profiles stored under the specified folder.
- Version 1.82:
 - Added 'Filename' column (For Chrome and Firefox Web browsers).
- Version 1.81:
 - Added support for Vivaldi Web browser.
- Version 1.80:
 - Finally... Fixed a crash problem occurred on some Windows 10 systems (The problem occurred if you added Gmail or other email account into Windows 10 Mail application). Also, WebBrowserPassView now displays the modified time of IE10/IE11 items.

- Version 1.75:
 - You can now choose the desired encoding (ANSI, UTF-8, UTF-16) to save the csv/xml/text/html files. (Under the Options menu)
 - Fixed problem with saving the KeePass csv file.
- Version 1.70:
 - WebBrowserPassView now automatically detect the passwords of Yandex Web browser.
- Version 1.68:
 - Another try to fix this mysterious Windows 10 crash problem, also added more debug info to /debugwin10
- Version 1.67:
 - Made another fix for Windows 10 crash problem...
- Version 1.66:
 - Made a small change in the password extraction of IE10/IE11/Microsoft Edge that hopefully will solve the crash problems occur on some Windows 10 systems.
 - If you have Windows 10 and WebBrowserPassView still crashes, please run WebBrowserPassView with /debugwin10 parameter, run also the DebugView tool of SysInternals, and then send me the last 4 debug lines that appeared before the crash.
- Version 1.65:
 - Added 'Created Time' and 'Modified Time' columns (These columns are active only for Web browsers that provide this information).
- Version 1.60:
 - WebBrowserPassView now automatically detects the passwords of Portable Firefox if it's running in the background.
- Version 1.58:
 - Fixed WebBrowserPassView to display properly user name/password with non-English characters on Chrome Web browser.
- Version 1.57:
 - WebBrowserPassView now detects the profile folder of Chromium Web browser.
- Version 1.56:
 - Removed the command-line options that export the passwords to a file from the official version. A version of this tool with full command-line support will be posted on separated Web page.
- Version 1.55:
 - Added support for Firefox 32 (logins.json).
- Version 1.50:
 - Updated to work with the latest versions of Opera.
- Version 1.46:
 - Added secondary sorting support: You can now get a secondary sorting, by holding down the shift key while clicking the column header. Be aware that you only have to hold down the shift key when clicking the second/third/fourth column. To sort the first column you should not hold down the Shift key.
- Version 1.45:
 - Added support for SeaMonkey Web browser.

- Version 1.43:
 - Fixed to work with Firefox 22.
- Version 1.42:
 - Opera Web browser: Fixed to detect properly the passwords of login.live.com and probably other Web sites
- Version 1.41:
 - Improved the password decryption on IE10 / Windows 7.
- Version 1.40:
 - Added support for the passwords of Internet Explorer 10.
- Version 1.37:
 - WebBrowserPassView now reads the passwords from all profiles of Chrome Web browser.
- Version 1.36:
 - Fixed bug: WebBrowserPassView failed to work with master password of Firefox containing non-English characters.
- Version 1.35:
 - WebBrowserPassView now extracts the passwords from all profiles of Firefox Web browser and reads the profiles.ini file of Firefox to get the correct profile folders.
 - Added 'Mark Odd/Even Rows' option, under the View menu. When it's turned on, the odd and even rows are displayed in different color, to make it easier to read a single line.
 - Fixed issue: The properties dialog-box and other windows opened in the wrong monitor, on multi-monitors system.
- Version 1.30:
 - Add new command-line options: /LoadPasswordsIE , /LoadPasswordsFirefox , /LoadPasswordsChrome , /LoadPasswordsOpera , and more...
- Version 1.26:
 - Fixed bug: WebBrowserPassView failed to get the passwords of Firefox and Chrome, if the path of their password file contained non-English characters.
- Version 1.25:
 - Added 'User Name Field' and 'Password Field' columns for Chrome, Firefox, and Opera Web browsers.
- Version 1.20:
 - Added 'Password Strength' column, which calculates the strength of the password and displays it as Very Weak, Weak, Medium, Strong, or Very Strong.
- Version 1.15:
 - Added support for Safari Web browser (passwords are decrypted from keychain.plist)
- Version 1.12:
 - WebBrowserPassView now automatically extracts the passwords of Chrome Canary.
- Version 1.11:
 - The passwords of Chrome Web browser are now displayed properly even when the password file is locked by Chrome.
- Version 1.10:
 - Added option to choose the desired Opera password file (wand.dat).

- Improved the detection of Opera password file (wand.dat).
- Version 1.05:
 - Added new options for Firefox passwords: Use a master password to decrypt the passwords, Load the passwords from the specified profile folder, and the option to use the specified Firefox installation.
 - Added option specify the profile folder (User Data) of Google Chrome (For example: C:\Documents and Settings\Administrator\Local Settings\Application Data\Google\Chrome\User Data\Default)
Be aware that this feature only works if the profile was created by the current logged on user.
Loading from external drive is not supported yet.
- Version 1.00 - First release.

Using WebBrowserPassView

WebBrowserPassView doesn't require any installation process or additional DLL files. In order to start using it, simply run the executable file - WebBrowserPassView.exe

After running it, the main window of WebBrowserPassView displays the list of all Web browser passwords found in your system. You can select one or more passwords and then copy the list to the clipboard (Ctrl+C) or export them into text/xml/html/csv file (Ctrl+S).

False Virus/Trojan Warning

WebBrowserPassView is a tool that retrieves secret passwords stored in your system, and thus your Antivirus may falsely detect this tool is infected with Trojan/Virus. [Click here](#) to read more about false alerts in Antivirus programs.

Command-Line Options

Notice: The save command-line options are disabled on the build you download from this Web page. You can find a package of password-recovery tools with full command-line support on the following Web page: [Windows Password Recovery Tools](#)

/LoadPasswordsIE <0 1>	Specifies whether to load the passwords of Internet Explorer Web browser. 0 = No, 1 = Yes.
/LoadPasswordsFirefox <0 1>	Specifies whether to load the passwords of Firefox Web browser. 0 = No, 1 = Yes.
/LoadPasswordsChrome <0 1>	Specifies whether to load the passwords of Chrome Web browser. 0 = No, 1 = Yes.
/LoadPasswordsOpera <0 1>	Specifies whether to load the passwords of Opera Web browser. 0 = No, 1 = Yes.

<p>/LoadPasswordsSafari <0 1></p>	<p>Specifies whether to load the passwords of Safari Web browser. 0 = No, 1 = Yes.</p>
<p>/UseFirefoxProfileFolder <0 1> /FirefoxProfileFolder <Folder></p>	<p>Specifies the profile folder of Firefox to load, for example: WebBrowserPassView.exe /UseFirefoxProfileFolder 1 /FirefoxProfileFolder "C:\Documents and Settings\admin\Application Data\Mozilla\Firefox\Profiles\7a2ttm2u.default"</p>
<p>/UseFirefoxInstallFolder <0 1> /FirefoxInstallFolder <Folder></p>	<p>Specifies the installation folder of Firefox to use, for example: WebBrowserPassView.exe /UseFirefoxInstallFolder 1 /FirefoxInstallFolder "C:\Program Files\Mozilla Firefox"</p>
<p>/UseChromeProfileFolder <0 1> /ChromeProfileFolder <Folder></p>	<p>Specifies the profile folder of Chrome Web browser to load.</p>
<p>/UseOperaPasswordFile <0 1> /OperaPasswordFile <Password></p>	<p>Specifies the master password of Opera, for example: WebBrowserPassView.exe /UseOperaPasswordFile 1 /OperaPasswordFile "Thgr55f6"</p>
<p>/stext <Filename></p>	<p>Save the passwords list into a regular text file.</p>
<p>/stab <Filename></p>	<p>Save the passwords list into a tab-delimited text file.</p>
<p>/scomma <Filename></p>	<p>Save the passwords list into a comma-delimited text file (csv).</p>
<p>/stabular <Filename></p>	<p>Save the passwords list into a tabular text file.</p>
<p>/shtml <Filename></p>	<p>Save the passwords list into HTML file (Horizontal).</p>
<p>/sverhtml <Filename></p>	<p>Save the passwords list into HTML file (Vertical).</p>
<p>/sxml <Filename></p>	<p>Save the passwords list into XML file.</p>
<p>/skeepass <Filename></p>	<p>Save the passwords list into csv file that can be imported into Keepass Password Manager.</p>
<p>/sort <column></p>	<p>This command-line option can be used with other save options for sorting by the desired column. If you don't specify this option, the list is sorted according to the last sort that you made from the user interface. The <column> parameter can specify the column index (0 for the first column, 1 for the second column, and so on) or the name of the column, like "URL" and "Web Browser". You can specify the '~' prefix character (e.g: "~Web Browser") if you want to sort in descending order. You can put multiple /sort in the command-line if you want to sort by multiple columns.</p> <p>Examples: WebBrowserPassView.exe /shtml "f:\temp\passwords.html" /sort 2 /sort</p>

	~1 WebBrowserPassView.exe /shtml "f:\temp\passwords.html" /sort "Web Browser" /sort "URL"
/nosort	When you specify this command-line option, the list will be saved without any sorting.

Translating WebBrowserPassView to other languages

In order to translate WebBrowserPassView to other language, follow the instructions below:

1. Run WebBrowserPassView with /savelangfile parameter:

WebBrowserPassView.exe /savelangfile

A file named WebBrowserPassView_lng.ini will be created in the folder of WebBrowserPassView utility.

2. Open the created language file in Notepad or in any other text editor.
3. Translate all string entries to the desired language. Optionally, you can also add your name and/or a link to your Web site. (TranslatorName and TranslatorURL values) If you add this information, it'll be used in the 'About' window.
4. After you finish the translation, Run WebBrowserPassView, and all translated strings will be loaded from the language file.
If you want to run WebBrowserPassView without the translation, simply rename the language file, or move it to another folder.

License

This utility is released as freeware. You are allowed to freely use it at your home or in your company. However, you are not allowed to make profit from this software or to charge your customers for recovering their passwords with this software, unless you got a permission from the software author.

You are also allowed to freely distribute this utility via floppy disk, CD-ROM, Internet, or in any other way, as long as you don't charge anything for this. If you distribute this utility, you must include all files in the distribution package, without any modification !

Disclaimer

The software is provided "AS IS" without any warranty, either expressed or implied, including, but not limited to, the implied warranties of merchantability and fitness for a particular purpose. The author will not be liable for any special, incidental, consequential or indirect damages due to loss of data or any other reason.

Feedback

If you have any problem, suggestion, comment, or you found a bug in my utility, you can send a message to nirsofer@yahoo.com

WebBrowserPassView is also available in other languages. In order to change the language of WebBrowserPassView, download the appropriate language zip file, extract the 'webbrowserpassview_lng.ini', and put it in the same folder that you Installed WebBrowserPassView utility.

Language	Translated By	Date	Version
Arabic	Mohamed Bajdouai	23/04/2015	1.60
Brazilian Portuguese	Jaff (Oprea Nicolae)	23/09/2017	1.86
Croatian	RandomCroatianGuy	28/08/2016	1.80
Czech	Shar (viteco(at-sign)centrum.cz)	29/04/2025	2.15
Dutch	Jan Verheijen	07/11/2025	2.18
French	Largo	04/11/2025	2.18
French	Cyberini	23/04/2019	1.86
French	Dimitri Janczak	04/09/2022	2.11
Georgian	Mamuka Cheliashvili	13/10/2014	1.00
German	«Latino»	04/11/2025	2.18
Greek	geogeo.gr	05/07/2025	2.16
Hebrew	peterg	01/06/2011	1.11
Hellenic	ÈáíŪóçò Êáôóáââþñãçò	03/03/2011	1.00
Hungarian	Timinoun	16/12/2025	2.18
Italian	Jaff (Oprea Nicolae)	23/09/2017	1.86
Italian	Andrea Carli e bovirus	16/10/2025	2.17
Japanese	coolvitto	28/04/2025	2.15
Korean	VenusGirl (비너스걸)	08/06/2025	2.16
Persian	ZendegiyeSabz	09/05/2025	2.15
Polish	Hightower	07/05/2025	2.15
Polish	Daniel Sajdyk (www.sajdyk.pl)	06/01/2016	1.70
Romanian	Jaff (Oprea Nicolae)	23/09/2017	1.86
Russian	Dmitry Yerokhin	04/11/2025	2.18

Simplified Chinese	李柏均 (Localized by Bojun Li)	01/07/2017	1.86
Simplified Chinese	DickMoore	31/05/2025	2.15
Simplified Chinese	Qiang	29/04/2020	2.00
Serbian	Bojan Maksimovic	03/11/2014	1.56
Slovak	František Fico	10/01/2026	2.18
Spanish	Jaff (Oprea Nicolae)	23/09/2017	1.86
Spanish	Jose (Anunciosgoogle)	02/04/2014	1.45
Swedish	Jaff (Oprea Nicolae)	22/11/2013	1.45
Traditional Chinese	Danfong Hsieh	28/04/2025	2.15
Traditional Chinese	丹楓(虫二電氣診所)	01/03/2015	1.58
Thai	น้องพร WiFi ค่ะ	16/08/2013	1.43
Turkish	Cemil Kaynar	11/04/2017	1.85
Turkish	HARUN ARI	11/12/2022	2.12
Ukrainian	Vasyl Belynets	01/02/2017	1.82
Uzbek	Shamsiddinov Zafar	18/10/2020	2.05
Valencian	Jaff (Oprea Nicolae)	23/09/2017	1.86
Vietnamese	Nhok35	04/07/2014	1.43
Vietnamese	Phạm Tuấn Khanh - pk911	10/05/2015	1.60

Source: https://www.nirsoft.net/utis/web_browser_password.html