

Windows .msc files overview - gHacks Tech News

By Martin Brinkmann

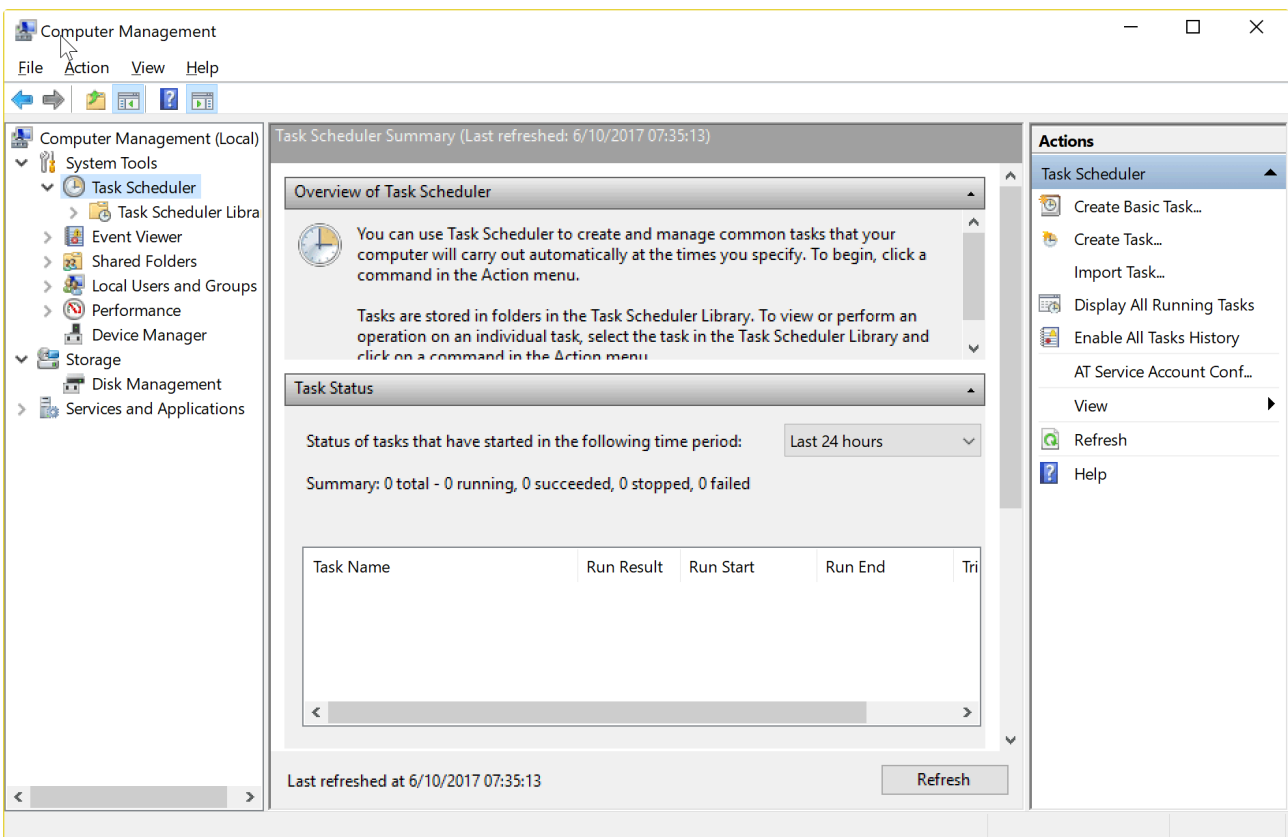
Published: 2017-06-10 · Archived: 2026-04-05 20:28:56 UTC

MSC files are snap-in control files that are associated with the Microsoft Management Console on Windows machines to run administrative tasks.

You may run some msc files like services.msc or gpedit.msc regularly, but there are plenty more that you can run or create on Windows client and server machines to speed up administrative processes.

Microsoft Windows ships with native .msc files integrated in the operating system, and support for the creation or importing of custom snap-in control files.

The Microsoft Management Console (MMC) was released originally with the Windows 98 Resource Kit, but Microsoft did integrate it in all versions of Windows released afterwards.

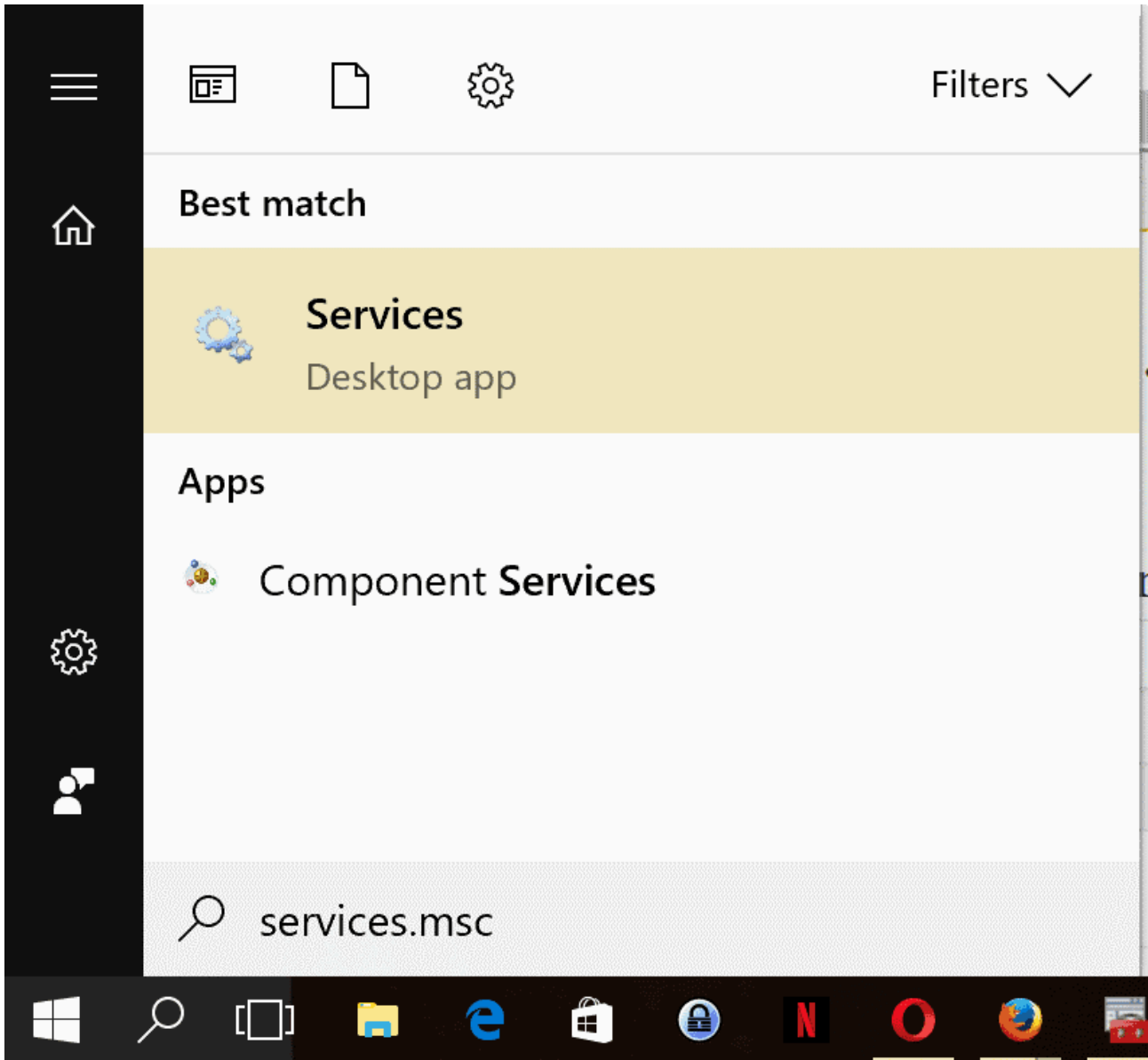


MMC is a framework for administrative tools in which these tools operate. It comes with a graphical user interface, and supports the creation, running, and saving of administrative jobs.

The framework hosts tools, and displays them in its interface by using so-called snap-ins and extension snap-ins. What makes the Microsoft Management Console that flexible is that administrators may create and assign tools to specific user groups, computer systems, or users.

Note: This is a second part of our series about Windows administrative tools. We covered the Windows Control Panel, and the administrative files that you could [run to launch various Control Panel applets](#) directly in the first.

List of Windows .msc files



The default location of .msc files is Windows\System32. You can run any of the files with the shortcut Windows-R, typing the msc file name and extension, and hitting the Enter-key on the keyboard.

Msc File	Console	Description
azman.msc	Authorization Manager	Manage Authorization Stores
certlm.msc	Certificates Local Computer	Loads the list of certificates of the local computer.
certmgr.msc	Certificates	Loads the list of certificates of the user

comexp.msc	Component Services	Loads Component Services, Event Viewer, and Services.
compmgmt.msc	Computer Management	Includes System Tools (Task Scheduler, Event Viewer, Shared Folders, Local Users and Groups, Performance and Device Manager), Storage (Disk Management), and Services and Applications (Services and WMI Control)
devmgmt.msc	Device Manager	Opens the Device Manager to manage hardware and devices.
devmoderunasuserconfig.msc		
diskmgmt.msc	Disk Management	Opens Disk Management to administrate connected storage devices.
eventvwr.msc	Event Viewer	Opens the Event Viewer which displays operating system, software, and hardware events.
fsmgmt.msc	Shared Folders	Loads the list of shared folders, sessions, and open files
gpedit.msc	Group Policy Editor	Loads the Group Policy Editor to manage system policies
lusrmgr.msc	Local Users and Groups	Interface to manage local users and user groups.
perfmon.msc	Performance Monitor	Loads the Windows Performance Monitor
printmanagement.msc	Print Management	Manage printers.
rsop.msc	Resultant Set of Policies	List policies, full results only available through command line tool gpresult
secpol.msc	Local Security Policy	Loads policies such as account policies, public key policies, or advanced audit policy configuration
services.msc	Services Manager	Loads the list of installed services to manage them.

taskschd.msc	Task Scheduler	Loads the Task Scheduler to manage tasks
tpm.msc	Trusted Platform Module Management	Manage the TPM on the local device.
wf.msc	Windows Firewall	Starts Windows Firewall with Advanced Security.
wmimgmt.msc	WMI Management	Configure and Control the Windows Management Instrumentation Service.

List of Windows Server MMC Files

Msc File	Console
adfs.msc	Active Directory Federation Services
AdRmsAdmin.msc	Active Directory Rights Management Services
adsiedit.msc	ADSI Edit
certim.msc	Local Computer Certificates
certsrv.msc	Certification Authority
certtmpl.msc	Certification Templates
ciadv.msc	Indexing Service
cluadmin.msc	Failover Cluster Manager
da6to4.msc	Network Interfaces Performance Monitor
daihttps.msc	HTTPS Traffic Performance Monitor
daipsecdos.msc	IPSec Performance Monitor
daisatap.msc	ISATAP Performance Monitor
dfsmgmt.msc	DFS Management
dhcpgmt.msc	DHCP Management
dnsmgmt.msc	DNS Manager
domain.msc	Active Directory Domains and Trust
dsa.msc	Active Directory Users and Computers.

dssite.msc	Active Directory Sites and Services
fsm.msc	File Server Resource Manager
fxsadmin.msc	Microsoft Fax Service Manager
gpmmc.msc	Group Policy Management
gpme.msc	Group Policy Management Editor
gptedit.msc	Group Policy Starter GPO Editor
hcsfcg.msc	Health Registration Authority
idmumgmt.msc	Microsoft Identity Management for Unix
iis.msc	Internet Information Services Manager
iis6.msc	Internet Information Services Manager 6.0
lsdiag.msc	RD Licensing Diagnoser
napclcfg.msc	NAP Client Configuration
mfsmgmt.msc	Services for Network File System
nps.msc	Network Policy Server
ocsp.msc	Online Responder
pkiview.msc	Enterprise PKI
remoteprograms.msc	RemoteApp Manager
rrasmgmt.msc	Routing and Remote Access
sanmmc.msc	Storage Manager for SANs
sbmgr.msc	Remote Desktop Connection Manager
scanmanagement.msc	Scan Management
servermanager.msc	Server Manager
storagemgmt.msc	Share and Storage Management
storeexpl.msc	Storage Explorer
tapimgmt.msc	Telephony
tsadmin.msc	Remote Desktop Services Manager
tsconfig.msc	Remote Desktop Session Host Configuration

tsgateway.msc	RD Gateway Manager
tsmmc.msc	Remote Desktops
virtmgmt.msc	Hyper-V Manager
wbadmin.msc	Windows Server Backup
Wdsmgmt-msc	Windows Deployment Services
winsmgmt.msc	WINS
wbiadmin.msc	Windows Server Backup
wsrc.msc	Windows System Resource Manager
wsus.msc	Update Services

Resources

- Microsoft Management Console -- [Wikipedia](#)
- Microsoft Management Console Overview -- [Microsoft MSDN](#)
- Step-by-Step Guide to the Microsoft Management Console -- [Microsoft MSDN](#)



Source: <https://www.ghacks.net/2017/06/10/windows-msc-files-overview/>